

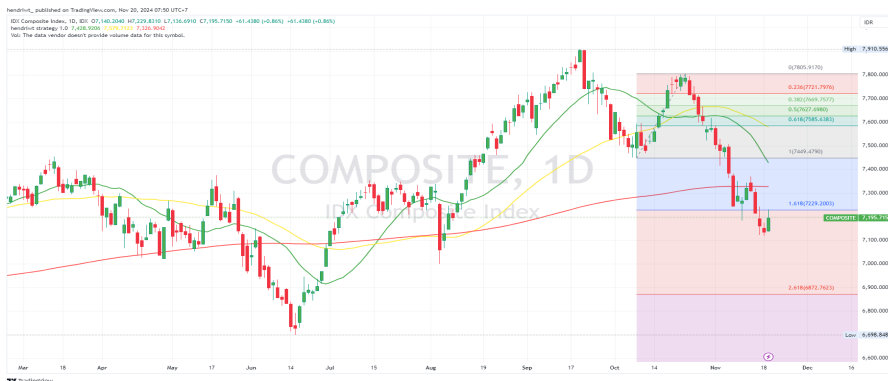
<b>IHSG</b>	<b>7,196</b>
Change (%)	<b>0.86%</b>
Net Foreign	<b>27.39 T</b>
Support	<b>7150</b>
Resistance	<b>7240</b>

Sectoral	Last	Change %
IDX:IDX BASIC	1,343.6	0.58%
IDX:IDX CYCLIC	842.8	2.18%
IDX:IDX ENERGY	2,657.8	0.26%
IDX:IDX FINANCE	1,444.8	0.14%
IDX:IDX HEALTH	1,430.9	-0.24%
IDX:IDX NONCYC	730.0	0.41%
IDX:IDX INDUSTRIAL	1,069.8	0.38%
IDX:IDX INFRA	1,433.1	2.56%
IDX:IDX PROPERTY	771.1	1.50%
IDX:IDX TECHNO	4,221.2	5.24%
IDX:IDX TRANS	1,400.4	0.13%

Commodities	Last	Change %
Crude Oil Nov 24	68.3	0.10%
Brent Crude Oil	71.6	0.13%
Gold Dec 24	2684.5	0.61%
Copper Dec 24	4.7	1.64%

Indeks	Close	Change %
Dow Jones Industrial Average	43,269	-0.28%
S&P 500	5,917	0.40%
NASDAQ Composite	18,987	1.04%
FTSE 100	8,099	-0.13%
DAX PERFORMANCE-INDEX	19,060	-0.67%
IHSG	7,196	0.86%
HANG SENG INDEX	19,664	0.00%
Nikkei 225	38,475	0.16%

Indikator	Tingkat
GDP Growth Rate	1.5 percent
GDP Annual Growth Rate	4.95 percent
Unemployment Rate	4.91 percent
Inflation Rate	1.71 percent
Inflation Rate MoM	0.08 percent
Interest Rate	6 percent
Balance of Trade	3257 USD Million
Current Account	-3021 USD Million
Current Account to GDP	-0.3 percent of GDP
Government Debt to GDP	39.3 percent of GDP
Government Budget	-1.65 percent of GDP
Business Confidence	14.4 points
Manufacturing PMI	49.2 points



Source: Trading View, Divisi Research Erdikha

### NEWS HIGHLIGHT

- Transaksi Tuntas, Bali Media Kempit 41,17 Persen Saham FREN
- Profit Taking, Investor Ini Lego 173,9 Juta Saham CBRE Rp25 per Lembar
- Tambah Porsi Saham BOAT, Sugiman Halim Rogoh Kocek Rp29 Miliar
- Pinago Utama (PNGO) Bagi Dividen Interim Rp40 per Saham
- Pendapatan Drop, Rugi TELE Bengkang Jadi Rp37,3M di Kuartal III

### NEWS MARKET

- \*1. Kinerja IHSG dan Rupiah:\*
  - IHSG: Menguat 0,86% ke level 7.195,71 pada Selasa (19/11/2024), dengan nilai transaksi mencapai Rp11 triliun. Sektor teknologi memimpin penguatan sebesar 5,24%.
  - Rupiah: Menguat tipis 0,13% ke Rp15.825/US\$, dengan fluktuasi di rentang Rp15.835–15.780/US\$ sepanjang perdagangan.
- \*2. Fokus Utama Pasar:\*
  - Keputusan BI Rate: Pelaku pasar menantikan keputusan suku bunga BI yang akan diumumkan Rabu (20/11/2024). Mayoritas proyeksi memperkirakan BI menahan suku bunga di 6%, meskipun ada ruang untuk penurunan 25 bps guna mendorong ekonomi.
  - Bank Sentral China: Pasar juga mencermati kebijakan suku bunga Loan Prime Rate (LPR), yang diperkirakan tetap di 3,1% (tenor 1 tahun) dan 3,6% (tenor 5 tahun).
- \*3. Sentimen Global:\*
  - The Fed: Pernyataan Ketua The Fed Jerome Powell menunjukkan pendekatan hati-hati terhadap penurunan suku bunga lebih lanjut, mengingat inflasi AS naik ke 2,6% (YoY) pada Oktober 2024.
  - Ketegangan Geopolitik: Isu geopolitik global, termasuk ketegangan Rusia-Ukraina, menjadi perhatian tambahan bagi pelaku pasar.
- \*4. Sentimen Domestik:\*
  - Data NPI dan Transaksi Berjalan: Pasar menanti rilis data neraca pembayaran kuartal III-2024, setelah defisit transaksi berjalan melebar ke US\$3,02 miliar di kuartal sebelumnya.
  - Cum Date Dividen BBKA: Hari ini adalah cum date dividen interim BBKA senilai Rp50 per saham, dengan total pembayaran dividen mencapai Rp6,16 triliun (naik 18% YoY).
- \*5. Prospek Pasar:\*
  - Pasar keuangan RI bergerak positif tetapi masih dibayangi tekanan global dan ketidakpastian suku bunga. Keputusan BI dan data ekonomi akan menjadi katalis utama pekan ini.

Sources : CNBC Indonesia, Trading economic, [kontan.co.id](http://kontan.co.id),

Stock Recommendation						
Stock	Last Price	Recommendation	TP 1	TP 2	Stop Loss	Commentary
TLKM	2,780	Trading Buy	2,830	2,910	2,690	ATL, entry level: 2700-2780
AMRT	2,960	Trading Buy	3,010	3,100	2,870	Oversold, Pull Back MA200, entry level: 2880-2960
PNLF	464	Trading Buy	472	486	450	Oversold, Pull Back MA50, entry level: 452-464
BRMS	436	Buy on Weakness	444	456	422	Consolidation, entry level: 424-436
RAJA	2,140	Hold	2,180	2,240	2,070	Gap Up

# LQ45 TECHNICAL VIEW



Wednesday, November 20, 2024

Daily Support & Resistance					
CODE	S2	S1	Price	R1	R2
ACES	770	785	815	845	860
ADRO	3,520	3,590	3,710	3,850	3,910
AKRA	1,240	1,270	1,310	1,370	1,390
AMRT	2,790	2,840	2,960	3,060	3,120
ANTM	1,350	1,380	1,475	1,530	1,575
ARTO	2,340	2,410	2,550	2,690	2,760
ASII	4,850	4,870	4,970	5,000	5,050
BBCA	9,750	9,825	9,925	10,075	10,125
BBNI	4,710	4,750	4,850	4,930	4,980
BBRI	4,270	4,310	4,360	4,430	4,450
BBTN	1,235	1,250	1,280	1,310	1,325
BMRI	6,025	6,125	6,250	6,425	6,475
BRIS	2,670	2,720	2,780	2,880	2,910
BRPT	805	825	850	885	895
BUKA	113	116	121	126	128
CPIN	4,670	4,710	4,750	4,830	4,850
EMTK	440	450	476	494	505
ESSA	800	820	855	890	905
EXCL	2,070	2,110	2,180	2,250	2,280
GGRM	12,925	13,000	13,200	13,350	13,450
GOTO	62	65	74	79	83
HRUM	1,090	1,105	1,155	1,185	1,210
ICBP	11,525	11,650	11,900	12,150	12,275
INCO	3,600	3,650	3,710	3,810	3,840
INDF	7,625	7,650	7,800	7,850	7,925
INKP	6,925	7,025	7,150	7,325	7,375
INTP	6,775	6,825	7,000	7,075	7,150
ITMG	26,200	26,350	26,800	27,100	27,325
KLBF	1,385	1,405	1,425	1,465	1,475
MAPI	1,320	1,375	1,585	1,695	1,800
MBMA	480	488	505	520	530
MDKA	1,950	1,980	2,080	2,140	2,190
MEDC	1,025	1,050	1,090	1,140	1,160
MTEL	545	555	580	595	605
PGAS	1,445	1,455	1,505	1,525	1,550
PGEO	1,015	1,020	1,040	1,050	1,060
PTBA	2,660	2,690	2,770	2,830	2,870
PTMP	56	59	65	71	74
SIDO	565	570	580	590	595
SMGR	3,430	3,490	3,680	3,790	3,880
SRTG	1,865	1,930	2,130	2,260	2,360
TLKM	2,370	2,480	2,780	3,000	3,150
TOWR	685	695	720	735	745
UNTR	25,375	25,600	26,350	26,800	27,175
UNVR	1,765	1,785	1,805	1,845	1,855

Price Performance									
CODE	Daily (%)	P/E	YTD (%)	%	52W Low	CURRENT POSITION	52W High	%	
ACES	-1.21%	16	13.2%	23%	665	▼	995	-18%	
ADRO	0.27%	4	55.9%	60%	2,320	▼	4,300	-14%	
AKRA	-2.24%	10	-11.2%	1%	1,295	▼	1,865	-30%	
AMRT	1.37%	34	1.0%	19%	2,490	▼	3,650	-19%	
ANTM	5.73%	15	-13.5%	26%	1,175	▼	1,845	-20%	
ARTO	3.66%	330	-12.1%	35%	1,895	▼	3,860	-34%	
ASII	0.81%	6	-12.0%	16%	4,290	▼	5,850	-15%	
BBCA	-0.75%	23	5.6%	14%	8,675	▼	10,950	-9%	
BBNI	-0.41%	8	-9.8%	14%	4,260	▼	6,250	-22%	
BBRI	0.23%	11	-23.8%	7%	4,090	▼	6,450	-32%	
BBTN	1.59%	5	2.4%	9%	1,175	▼	1,610	-20%	
BMRI	-1.19%	10	3.3%	13%	5,525	▼	7,550	-17%	
BRIS	-2.46%	19	59.8%	74%	1,595	▼	3,350	-17%	
BRPT	0.59%	315	-36.1%	1%	840	▼	1,947	-56%	
BUKA	1.68%	#N/A	-44.0%	13%	107	▼	222	-45%	
CPIN	-0.21%	38	-5.5%	8%	4,410	▼	5,650	-16%	
EMTK	3.48%	63	-19.3%	36%	350	▼	670	-29%	
ESSA	1.79%	16	61.3%	74%	490	▼	1,010	-15%	
EXCL	1.40%	18	9.0%	16%	1,885	▼	2,650	-18%	
GGRM	0.00%	14	-35.1%	1%	13,075	▼	22,325	-41%	
GOTO	8.82%	#N/A	-14.0%	48%	50	▼	116	-36%	
HRUM	3.13%	8	-13.5%	10%	1,050	▼	1,590	-27%	
ICBP	-0.63%	17	12.5%	24%	9,600	▼	12,875	-8%	
INCO	0.54%	23	-13.9%	4%	3,554	▼	5,218	-29%	
INDF	0.97%	7	20.9%	33%	5,850	▼	8,000	-3%	
INKP	-0.69%	8	-14.1%	1%	7,100	▼	10,000	-29%	
INTP	1.45%	14	-25.5%	12%	6,275	▼	10,200	-31%	
ITMG	-0.19%	5	4.5%	14%	23,575	▼	28,775	-7%	
KLBF	-0.70%	21	-11.5%	4%	1,375	▼	1,795	-21%	
MAPI	9.31%	15	-11.5%	28%	1,240	▼	2,050	-23%	
MBMA	1.00%	71	-9.8%	6%	476	▼	730	-31%	
MDKA	3.48%	196	-23.0%	4%	1,995	▼	2,970	-30%	
MEDC	2.35%	5	-5.6%	11%	980	▼	1,635	-33%	
MTEL	2.65%	23	-17.7%	5%	550	▼	765	-24%	
PGAS	2.73%	7	33.2%	42%	1,060	▼	1,700	-11%	
PGEO	1.46%	17	-11.1%	5%	990	▼	1,500	-31%	
PTBA	1.84%	6	13.5%	20%	2,300	▼	3,180	-13%	
PTMP	3.17%	12	-67.8%	25%	52	▼	338	-81%	
SIDO	0.00%	15	10.5%	18%	492	▼	780	-26%	
SMGR	3.66%	21	-42.5%	8%	3,410	▼	6,725	-45%	
SRTG	6.50%	5	29.9%	74%	1,225	▼	2,800	-24%	
TLKM	7.34%	12	-29.6%	11%	2,500	▼	4,240	-34%	
TOWR	1.41%	11	-27.3%	9%	660	▼	1,030	-30%	
UNTR	1.93%	5	16.5%	26%	20,925	▼	28,150	-6%	
UNVR	-0.82%	19	-48.9%	4%	1,735	▼	3,700	-51%	

Sumber: Research Team Erdikha Elit Sekuritas

# LQ45 PRICE PERFORMANCE



Wednesday, November 20, 2024

CODE	PRICE	Daily (%)	PER		52 WEEK PRICE PERFORMANCE	YTD (%)		PRICE	%	52W Low	CURRENT POSITION	52W High	%
ESSA	855	1.79%	16			61.32%		855	74%	490	▼	1,010	-15%
BRIS	2,780	-2.46%	19			59.77%		2,780	74%	1,595	▼	3,350	-17%
ADRO	3,710	0.27%	4			55.88%		3,710	60%	2,320	▼	4,300	-14%
AMMN	9,575	0.52%	74			46.18%		9,575	64%	5,850	▼	15,000	-36%
PGAS	1,505	2.73%	7			33.19%		1,505	42%	1,060	▼	1,700	-11%
SRTG	2,130	6.50%	5			29.88%		2,130	74%	1,225	▼	2,800	-24%
INDF	7,800	0.97%	7			20.93%		7,800	33%	5,850	▼	8,000	-3%
UNTR	26,350	1.93%	5			16.46%		26,350	26%	20,925	▼	28,150	-6%
PTBA	2,770	1.84%	6			13.52%		2,770	20%	2,300	▼	3,180	-13%
ACES	815	-1.21%	16			13.19%		815	23%	665	▼	995	-18%
ICBP	11,900	-0.63%	17			12.53%		11,900	24%	9,600	▼	12,875	-8%
SIDO	580	0.00%	15			10.48%		580	18%	492	▼	780	-26%
EXCL	2,180	1.40%	18			9.00%		2,180	16%	1,885	▼	2,650	-18%
BBCA	9,925	-0.75%	23			5.59%		9,925	14%	8,675	▼	10,950	-9%
ITMG	26,800	-0.19%	5			4.48%		26,800	14%	23,575	▼	28,775	-7%
BMRI	6,250	-1.19%	10			3.31%		6,250	13%	5,525	▼	7,550	-17%
BBTN	1,280	1.59%	5			2.40%		1,280	9%	1,175	▼	1,610	-20%
AMRT	2,960	1.37%	34			1.02%		2,960	19%	2,490	▼	3,650	-19%
CPIN	4,750	-0.21%	38			-5.47%		4,750	8%	4,410	▼	5,650	-16%
MEDC	1,090	2.35%	5			-5.63%		1,090	11%	980	▼	1,635	-33%
BBNI	4,850	-0.41%	8			-9.77%		4,850	14%	4,260	▼	6,250	-22%
MBMA	505	1.00%	71			-9.82%		505	6%	476	▼	730	-31%
PGEO	1,040	1.46%	17			-11.11%		1,040	5%	990	▼	1,500	-31%
AKRA	1,310	-2.24%	10			-11.19%		1,310	1%	1,295	▼	1,865	-30%
MAPI	1,585	9.31%	15			-11.45%		1,585	28%	1,240	▼	2,050	-23%
KLBF	1,425	-0.70%	21			-11.49%		1,425	4%	1,375	▼	1,795	-21%
ASII	4,970	0.81%	6			-12.04%		4,970	16%	4,290	▼	5,850	-15%
ARTO	2,550	3.66%	330			-12.07%		2,550	35%	1,895	▼	3,860	-34%
HRUM	1,155	3.13%	8			-13.48%		1,155	10%	1,050	▼	1,590	-27%
ANTM	1,475	5.73%	15			-13.49%		1,475	26%	1,175	▼	1,845	-20%
INCO	3,710	0.54%	23			-13.92%		3,710	4%	3,554	▼	5,218	-29%
GOTO	74	8.82%	#N/A			-13.95%		74	48%	50	▼	116	-36%
INKP	7,150	-0.69%	8			-14.11%		7,150	1%	7,100	▼	10,000	-29%
MTEL	580	2.65%	23			-17.73%		580	5%	550	▼	765	-24%
MDKA	2,080	3.48%	196			-22.96%		2,080	4%	1,995	▼	2,970	-30%
BBRI	4,360	0.23%	11			-23.84%		4,360	7%	4,090	▼	6,450	-32%
INTP	7,000	1.45%	14			-25.53%		7,000	12%	6,275	▼	10,200	-31%
TOWR	720	1.41%	11			-27.27%		720	9%	660	▼	1,030	-30%
TLKM	2,780	7.34%	12			-29.62%		2,780	11%	2,500	▼	4,240	-34%
GGRM	13,200	0.00%	14			-35.06%		13,200	1%	13,075	▼	22,325	-41%
BRPT	850	0.59%	315			-36.09%		850	1%	840	▼	1,947	-56%
SMGR	3,680	3.66%	21			-42.50%		3,680	8%	3,410	▼	6,725	-45%
BUKA	121	1.68%	#N/A			-43.98%		121	13%	107	▼	222	-45%
UNVR	1,805	-0.82%	19			-48.87%		1,805	4%	1,735	▼	3,700	-51%
ISAT	2,450	9.38%	14			-73.87%		2,450	16%	2,120	▼	3,063	-20%

Sumber: Research Team Erdikha Elit Sekuritas

## KETERANGAN

**PER** : PER saat ini dibawah 10 kali

**YTD (%)** : Kinerja harga saat ini dibandingkan dengan harga saham awal tahun 45 saham yang memiliki likuiditas tinggi dan kapitalisasi pasar

**52W Low** : **Harga terendah** selama 52 Minggu terakhir

**52W High** : **Harga tertinggi** selama 52 Minggu terakhir

**LQ45** adalah Indeks yang mengukur kinerja harga dari besar serta didukung oleh fundamental perusahaan yang baik.

# MSCI PRICE PERFORMANCE



Wednesday, November 20, 2024

CODE	PRICE	Daily (%)	PER	PRICE	52 WEEK PRICE PERFORMANCE	YTD (%)	PRICE	%	52W Low	CURRENT POSITION	52W High	%
1 ADRO	3,710	0.27%	4	ADRO		55.88%	ADRO	3,710	60%	2,320	4,300	-14%
2 AMMN	9,575	0.52%	74	AMMN		46.18%	AMMN	9,575	64%	5,850	15,000	-36%
3 TPIA	6,575	-2.23%	#N/A	TPIA		25.24%	TPIA	6,575	132%	2,840	11,225	-41%
4 INDF	7,800	0.97%	7	INDF		20.93%	INDF	7,800	33%	5,850	8,000	-3%
5 UNTR	26,350	1.93%	5	UNTR		16.46%	UNTR	26,350	26%	20,925	28,150	-6%
6 ICBP	11,900	-0.63%	17	ICBP		12.53%	ICBP	11,900	24%	9,600	12,875	-8%
7 BBKA	9,925	-0.75%	23	BBKA		5.59%	BBKA	9,925	14%	8,675	10,950	-9%
8 BMRI	6,250	-1.19%	10	BMRI		3.31%	BMRI	6,250	13%	5,525	7,550	-17%
9 AMRT	2,960	1.37%	34	AMRT		1.02%	AMRT	2,960	19%	2,490	3,650	-19%
10 CPIN	4,750	-0.21%	38	CPIN		-5.47%	CPIN	4,750	8%	4,410	5,650	-16%
11 BBNI	4,850	-0.41%	8	BBNI		-9.77%	BBNI	4,850	14%	4,260	6,250	-22%
12 KLBF	1,425	-0.70%	21	KLBF		-11.49%	KLBF	1,425	4%	1,375	1,795	-21%
13 ASII	4,970	0.81%	6	ASII		-12.04%	ASII	4,970	16%	4,290	5,850	-15%
14 ANTM	1,475	5.73%	15	ANTM		-13.49%	ANTM	1,475	26%	1,175	1,845	-20%
15 GOTO	74	8.82%	#N/A	GOTO		-13.95%	GOTO	74	48%	50	116	-36%
16 INKP	7,150	-0.69%	8	INKP		-14.11%	INKP	7,150	1%	7,100	10,000	-29%
17 MDKA	2,080	3.48%	196	MDKA		-22.96%	MDKA	2,080	4%	1,995	2,970	-30%
18 BBRI	4,360	0.23%	11	BBRI		-23.84%	BBRI	4,360	7%	4,090	6,450	-32%
19 TLKM	2,780	7.34%	12	TLKM		-29.62%	TLKM	2,780	11%	2,500	4,240	-34%
20 BRPT	850	0.59%	315	BRPT		-36.09%	BRPT	850	1%	840	1,947	-56%
21 UNVR	1,805	-0.82%	19	UNVR		-48.87%	UNVR	1,805	4%	1,735	3,700	-51%

## Sector Weights for Monday, June 3, 2024

Sector	Weight%
Financials	57.94
Materials	12.77
Consumer Staples	8.48
Communication Services	7.6
Industrials	4.59
Energy	3.85
Consumer Discretionary	3.1
Health Care	1.66

## INDONESIA

- MSCI Global Standard Indexes List  
 Additions -  
 Deletions ANTM

## Industry Group Weights for Monday, June 3, 2024

Industry Group Name	Weight%
Banks	57.94
Materials	12.77
Telecommunication Services	7.6
Food Beverage & Tobacco	4.6
Capital Goods	4.59
Energy	3.85
Consumer Discretionary Distribution & Retail	3.1
Consumer Staples Distribution & Retail	2.62
Pharmaceuticals, Biotechnology & Life Sciences	1.66
Household & Personal Products	1.26

- MSCI Small Cap Indexes List  
 Additions : ANTM, CMRY, FILM, INCO, WIKA  
 Deletions : -

## NEXT

November 2024 Index Review  
 o Announcement date: 7 November 2024  
 o Effective date: 27 November 2024

Sumber: Research Team Erdikha Elit Sekuritas

## KETERANGAN

- PER** : PER saat ini dibawah 10 kali
- YTD (%)** : Kinerja harga saat ini dibandingkan dengan harga saham awal tahun
- 52W Low** : Harga terendah selama 52 Minggu terakhir
- 52W High** : Harga tertinggi selama 52 Minggu terakhir

# IDX80 PERFORMANCE



Wednesday, November 20, 2024

260

CODE	PRICE	Daily (%)	PER	52 WEEK PRICE PERFORMANCE	YTD (%)	PRICE	%	52W Low	CURRENT POSITION	52W High	%
PANI	14,500	3.20%	464		195.92%	PANI	14,500	242%	4,240	18,800	-23%
BRMS	436	-3.11%	229		156.47%	BRMS	436	243%	127	505	-14%
PNLF	464	3.57%	11		75.76%	PNLF	464	92%	242	520	-11%
ESSA	855	1.79%	16		61.32%	ESSA	855	74%	490	1,010	-15%
BRIS	2,780	-2.46%	19		59.77%	BRIS	2,780	74%	1,595	3,350	-17%
ADRO	3,710	0.27%	4		55.88%	ADRO	3,710	60%	2,320	4,300	-14%
AMMN	9,575	0.52%	74		46.18%	AMMN	9,575	64%	5,850	15,000	-36%
JPFA	1,715	0.29%	10		45.34%	JPFA	1,715	63%	1,055	1,875	-9%
PGAS	1,505	2.73%	7		33.19%	PGAS	1,505	42%	1,060	1,700	-11%
SRTG	2,130	6.50%	5		29.88%	SRTG	2,130	74%	1,225	2,800	-24%
MAPA	1,045	2.45%	21		27.44%	MAPA	1,045	54%	680	1,175	-11%
INDF	7,800	0.97%	7		20.93%	INDF	7,800	33%	5,850	8,000	-3%
UNTR	26,350	1.93%	5		16.46%	UNTR	26,350	26%	20,925	28,150	-6%
ELSA	448	2.28%	5		15.46%	ELSA	448	21%	370	545	-18%
ENRG	254	-3.05%	5		15.45%	ENRG	254	60%	159	310	-18%
NISP	1,340	0.75%	6		13.56%	NISP	1,340	21%	1,110	1,445	-7%
PTBA	2,770	1.84%	6		13.52%	PTBA	2,770	20%	2,300	3,180	-13%
ACES	815	-1.21%	16		13.19%	ACES	815	23%	665	995	-18%
ICBP	11,900	-0.63%	17		12.53%	ICBP	11,900	24%	9,600	12,875	-8%
GJTL	1,150	0.88%	3		11.11%	GJTL	1,150	35%	855	1,490	-23%
SIDO	580	0.00%	15		10.48%	SIDO	580	18%	492	780	-26%
EXCL	2,180	1.40%	18		9.00%	EXCL	2,180	16%	1,885	2,650	-18%
MYOR	2,670	2.30%	19		7.23%	MYOR	2,670	21%	2,200	3,010	-11%
BBCA	9,925	-0.75%	23		5.59%	BBCA	9,925	14%	8,675	10,950	-9%
ITMG	26,800	-0.19%	5		4.48%	ITMG	26,800	14%	23,575	28,775	-7%
BNGA	1,770	0.00%	7		4.42%	BNGA	1,770	9%	1,625	2,220	-20%
BMRI	6,250	-1.19%	10		3.31%	BMRI	6,250	13%	5,525	7,550	-17%
ERAA	440	3.77%	6		3.29%	ERAA	440	34%	328	486	-9%
BBTN	1,280	1.59%	5		2.40%	BBTN	1,280	9%	1,175	1,610	-20%
AMRT	2,960	1.37%	34		1.02%	AMRT	2,960	19%	2,490	3,650	-19%
SMRA	575	0.88%	9		0.00%	SMRA	575	20%	480	730	-21%
AUTO	2,350	2.17%	6		-0.42%	AUTO	2,350	31%	1,795	2,770	-15%
INDY	1,415	0.35%	8		-1.39%	INDY	1,415	23%	1,155	1,825	-22%
PWON	440	3.77%	9		-3.08%	PWON	440	20%	366	530	-17%
BSDE	1,030	2.49%	7		-4.63%	BSDE	1,030	18%	870	1,340	-23%
ADMR	1,295	3.19%	6		-4.78%	ADMR	1,295	11%	1,165	1,600	-19%
CPIN	4,750	-0.21%	38		-5.47%	CPIN	4,750	8%	4,410	5,650	-16%
MEDC	1,090	2.35%	5		-5.63%	MEDC	1,090	11%	980	1,635	-33%
MPMX	990	0.51%	8		-5.71%	MPMX	990	8%	915	1,095	-10%
CTRA	1,100	3.29%	11		-5.98%	CTRA	1,100	4%	1,055	1,430	-23%
JSMR	4,520	-0.44%	8		-7.19%	JSMR	4,520	3%	4,390	5,700	-21%
PTPP	392	3.70%	5		-8.41%	PTPP	392	44%	272	625	-37%
MIKA	2,610	-1.14%	34		-8.42%	MIKA	2,610	5%	2,490	3,310	-21%
HEAL	1,360	-0.37%	36		-8.72%	HEAL	1,360	28%	1,060	1,640	-17%
ASSA	715	-2.05%	13		-9.49%	ASSA	715	17%	610	1,000	-29%
TBIG	1,890	0.53%	27		-9.57%	TBIG	1,890	18%	1,600	2,180	-13%
BBNI	4,850	-0.41%	8		-9.77%	BBNI	4,850	14%	4,260	6,250	-22%
MBMA	505	1.00%	71		-9.82%	MBMA	505	6%	476	730	-31%
PGEO	1,040	1.46%	17		-11.11%	PGEO	1,040	5%	990	1,500	-31%
AKRA	1,310	-2.24%	10		-11.19%	AKRA	1,310	1%	1,295	1,865	-30%
AVIA	444	-2.63%	16		-11.20%	AVIA	444	5%	422	610	-27%
MAPI	1,585	9.31%	15		-11.45%	MAPI	1,585	28%	1,240	2,050	-23%
KLBF	1,425	-0.70%	21		-11.49%	KLBF	1,425	4%	1,375	1,795	-21%

48	ASII	4,970	0.81%	6
	ARTO	2,550	3.66%	330
29	TKIM	6,350	2.01%	9
	HRUM	1,155	3.13%	8
51	ANTM	1,475	5.73%	15
	INCO	3,710	0.54%	23
46	GOTO	74	8.82%	#N/A
	INKP	7,150	-0.69%	8
31	MTEL	580	2.65%	23
	NCKL	820	-1.20%	9
10	EMTK	476	3.48%	63
	MNCN	300	0.00%	4
7	MDKA	2,080	3.48%	196
	BBRI	4,360	0.23%	11
11	BMTR	200	2.04%	6
	INTP	7,000	1.45%	14
73	TOWR	720	1.41%	11
	BFIN	865	-1.70%	8
71	SCMA	121	0.83%	13
	TLKM	2,780	7.34%	12
9	GGRM	13,200	0.00%	14
	BRPT	850	0.59%	315
31	SMGR	3,680	3.66%	21
	BUKA	121	1.68%	#N/A
42	BTPS	930	1.09%	8
	UNVR	1,805	-0.82%	19
33	ISAT	2,450	9.38%	14

ASII		-12.04%
ARTO		-12.07%
TKIM		-13.01%
HRUM		-13.48%
ANTM		-13.49%
INCO		-13.92%
GOTO		-13.95%
INKP		-14.11%
MTEL		-17.73%
NCKL		-18.00%
EMTK		-19.32%
MNCN		-22.28%
MDKA		-22.96%
BBRI		-23.84%
BMTR		-25.37%
INTP		-25.53%
TOWR		-27.27%
BFIN		-28.22%
SCMA		-28.82%
TLKM		-29.62%
GGRM		-35.06%
BRPT		-36.09%
SMGR		-42.50%
BUKA		-43.98%
BTPS		-44.97%
UNVR		-48.87%
ISAT		-73.87%

ASII	4,970	16%	4,290	▼	5,850	-15%
ARTO	2,550	35%	1,895	▼	3,860	-34%
TKIM	6,350	4%	6,125	▼	9,075	-30%
HRUM	1,155	10%	1,050	▼	1,590	-27%
ANTM	1,475	26%	1,175	▼	1,845	-20%
INCO	3,710	4%	3,554	▼	5,218	-29%
GOTO	74	48%	50	▼	116	-36%
INKP	7,150	1%	7,100	▼	10,000	-29%
MTEL	580	5%	550	▼	765	-24%
NCKL	820	8%	760	▼	1,125	-27%
EMTK	476	36%	350	▼	670	-29%
MNCN	300	6%	284	▼	422	-29%
MDKA	2,080	4%	1,995	▼	2,970	-30%
BBRI	4,360	7%	4,090	▼	6,450	-32%
BMTR	200	3%	195	▼	282	-29%
INTP	7,000	12%	6,275	▼	10,200	-31%
TOWR	720	9%	660	▼	1,030	-30%
BFIN	865	8%	800	▼	1,380	-37%
SCMA	121	3%	117	▼	170	-29%
TLKM	2,780	11%	2,500	▼	4,240	-34%
GGRM	13,200	1%	13,075	▼	22,325	-41%
BRPT	850	1%	840	▼	1,947	-56%
SMGR	3,680	8%	3,410	▼	6,725	-45%
BUKA	121	13%	107	▼	222	-45%
BTPS	930	2%	910	▼	1,825	-49%
UNVR	1,805	4%	1,735	▼	3,700	-51%
ISAT	2,450	16%	2,120	▼	3,063	-20%

Sumber: Research Team Erdikha Elit Sekuritas

## KETERANGAN

- %52W Low** : % Kenaikan harga saat ini dibandingkan **Harga terendah** 52 Minggu terakhir
- %52W High** : % Penurunan harga saat ini dibandingkan **Harga tertinggi** 52 Minggu terakhir
- 52W Low** : **Harga terendah** selama 52 Minggu terakhir
- 52W High** : **Harga tertinggi** selama 52 Minggu terakhir
- YTD (%)** : Kinerja harga saat ini dibandingkan dengan harga saham awal tahun
- PER** : PER saat ini dibawah 10 kali

80 saham yang memiliki likuiditas tinggi dan kapitalisasi pasar **IDX80** adalah Indeks yang mengukur kinerja harga dari 80 saham yang memiliki likuiditas tinggi dan kapitalisasi pasar besar serta didukung oleh fundamental perusahaan yang baik.

## LQ 45 Performance

### \*Top Gainer\*

MAPI 1,585 (9.3%)

GOTO 74 (8.8%)

TLKM 2,780 (7.3%)

SRTG 2,130 (6.5%)

ANTM 1,475 (5.7%)

### \*Top Volume\*

GOTO 74 (73.6 Mn Lot)

BBRI 4,360 (2.9 Mn Lot)

TLKM 2,780 (2.7 Mn Lot)

BUKA 121 (2.5 Mn Lot)

ADRO 3,710 (1 Mn Lot)

### \*Top Frekuensi\*

BBRI 4,360 (42k x)

GOTO 74 (42k x)

TLKM 2,780 (38k x)

BBCA 9,925 (31k x)

ADRO 3,710 (18k x)

### \*Top Loser\*

BRIS 2,780 (-2.4%)

AKRA 1,310 (-2.2%)

ACES 815 (-1.2%)

BMRI 6,250 (-1.1%)

UNVR 1,805 (-0.8%)

### \*Top Value\*

BBRI 4,360 (1289.8 IDR Bn)

BBCA 9,925 (849 IDR Bn)

TLKM 2,780 (762.8 IDR Bn)

BMRI 6,250 (600.1 IDR Bn)

GOTO 74 (535 IDR Bn)

## All Stock Performance

### \*Top Gainer\*

BDKR 228 (34.9%)

INPC 164 (34.4%)

BTEK 4 (33.3%)

DOSS 222 (25.4%)

PNSE 1,090 (24.5%)

### \*Top Volume\*

GOTO 74 (73.6 Mn Lot)

BRMS 436 (15.1 Mn Lot)

BUMI 150 (12.9 Mn Lot)

DEWA 113 (4.3 Mn Lot)

INET 69 (3.6 Mn Lot)

### \*Top Frekuensi\*

AWAN 338 (118k x)

PSAB 316 (47k x)

BRMS 436 (44k x)

BBRI 4,360 (42k x)

GOTO 74 (42k x)

### \*Top Loser\*

ANDI 6 (-14.2%)

GMTD 3,530 (-12.8%)

TAXI 7 (-12.5%)

ASBI 625 (-10.7%)

CENT 45 (-10%)

### \*Top Value\*

BBRI 4,360 (1289.8 IDR Bn)

BBCA 9,925 (849 IDR Bn)

TLKM 2,780 (762.8 IDR Bn)

BRMS 436 (679.4 IDR Bn)

BMRI 6,250 (600.1 IDR Bn)

# ECONOMIC CALENDAR



Monday November 18 2024				Actual	Previous	Consensus	Forecast
10:00 PM	US	<a href="#">Fed Goolsbee Speech</a>					
10:00 PM	US	<a href="#">NAHB Housing Market Index</a> NOV		43	44	44	
Tuesday November 19 2024				Actual	Previous	Consensus	Forecast
4:00 AM	US	<a href="#">Net Long-term TIC Flows</a> SEP		\$111.4B	\$114.3B		
8:30 PM	US	<a href="#">Building Permits Prel</a> OCT		1.425M	1.440M	1.46M	
8:30 PM	US	<a href="#">Building Permits MoM Prel</a> OCT		-3.10%		2.50%	
8:30 PM	US	<a href="#">Housing Starts</a> OCT		1.354M	1.34M	1.35M	
8:30 PM	US	<a href="#">Housing Starts MoM</a> OCT		-0.50%		-0.20%	
Wednesday November 20 2024				Actual	Previous	Consensus	Forecast
4:30 AM	US	<a href="#">API Crude Oil Stock Change</a> NOV/15		-0.777M			
8:15 AM	CN	<a href="#">Loan Prime Rate 1Y</a>		3.10%	3.10%	3.10%	
8:15 AM	CN	<a href="#">Loan Prime Rate 5Y</a> NOV		3.60%	3.60%	3.60%	
2:30 PM	ID	<a href="#">Interest Rate Decision</a>		6.00%	6%	6.00%	
10:30 PM	US	<a href="#">EIA Crude Oil Stocks Change</a> NOV/15		2.089M			
10:30 PM	US	<a href="#">EIA Gasoline Stocks Change</a> NOV/15		-4.407M			
Thursday November 21 2024				Actual	Previous	Consensus	Forecast
8:30 PM	US	<a href="#">Initial Jobless Claims</a> NOV/16		217K	222K	224.0K	
8:30 PM	US	<a href="#">Philadelphia Fed Manufacturing Index</a> NOV		10.3	7	11	
10:00 PM	US	<a href="#">Existing Home Sales</a> OCT		3.84M	3.88M	3.87M	
10:00 PM	US	<a href="#">Existing Home Sales MoM</a> OCT		-1.00%		0.80%	
Friday November 22 2024				Actual	Previous	Consensus	Forecast
12:25 AM	US	<a href="#">Fed Goolsbee Speech</a>					
12:30 AM	US	<a href="#">Fed Hammack Speech</a>					
9:45 PM	US	<a href="#">S&amp;P Global Composite PMI Flash</a> NOV		54.1		54.3	
9:45 PM	US	<a href="#">S&amp;P Global Manufacturing PMI Flash</a> NOV		48.5	48.8	49.2	
9:45 PM	US	<a href="#">S&amp;P Global Services PMI Flash</a> NOV		55	55.2	55.1	
10:00 PM	US	<a href="#">Michigan Consumer Sentiment Final</a> NOV		70.5	73	73	
Monday November 25 2024				Actual	Previous	Consensus	Forecast
8:30 PM	US	<a href="#">Chicago Fed National Activity Index</a> OCT		-0.28		-0.15	
10:30 PM	US	<a href="#">Dallas Fed Manufacturing Index</a> NOV		-3	3.80%	4.00%	
9:00 AM	CN	<a href="#">Fixed Asset Investment (YTD) YoY</a> OCT		3.40%	3.50%	3.50%	
9:00 AM	CN	<a href="#">Unemployment Rate</a> OCT		5.10%	5.10%	5.20%	
11:00 AM	ID	<a href="#">Balance of Trade</a> OCT		\$3.26B		\$3.3B	
8:30 PM	US	<a href="#">Retail Sales MoM</a> OCT		0.40%	0.30%	0.30%	
8:30 PM	US	<a href="#">Export Prices MoM</a> OCT		-0.70%		-0.10%	
8:30 PM	US	<a href="#">Import Prices MoM</a> OCT		-0.40%	-0.10%	-0.10%	



# CORPORATE ACTION



Wednesday, November 20, 2024

## PENGUMUMAN

### UNUSUAL MARKET ACTIVITY (UMA)

19 Nov UMA (SFAN)  
19 Nov UMA (NSSS)  
18 Nov UMA (CLAY)  
15 Nov UMA (KARW)  
15 Nov UMA (FUTR)  
15 Nov UMA (DAAZ)  
14 Nov UMA (BALI)  
13 Nov UMA (PNSE)  
11 Nov UMA (GGRP)  
11 Nov UMA (DWGL)

### SUSPEND / UNSUSPEND

19 Nov **Pembukaan Kembali (DAAZ)**  
19 Nov **Penghentian Sementara (GGRP)**  
19 Nov **Pembukaan Kembali PACK-W)**  
18 Nov **Penghentian Sementara (DAAZ)**  
18 Nov **Pembukaan Kembali (BDKR)**  
15 Nov **Penghentian Sementara (BDKR)**  
15 Nov **Penghentian Sementara (DWGL)**  
15 Nov **Pembukaan Kembali (GGRP)**  
15 Nov **Pembukaan Kembali (PNSE)**  
14 Nov **Penghentian Sementara (PNSE)**

## AKSI KORPORASI

### 18 NOVEMBER 2024!

- Public Expose: CHEM  
- RUPS [Jam 09:00:00]: ADRO, PACK

### 19 NOVEMBER 2024!

- Public Expose: SBMA  
- RUPS [Jam 10:00:00]: LPCK, SMDM

### 20 NOVEMBER 2024!

- Cash Dividend [Distribution]: AMOR, SIDO, TAPG  
- RUPS [Jam 09:00:00]: DNAR, SOUL, SOTS, RELI

### 21 NOVEMBER 2024!

- Cash Dividend [Distribution]: DVLA, WINS, XCID, SMSM, BSSR, TEBE  
- RUPS [Jam 14:00:00]: UVCR

### 22 NOVEMBER 2024!

- RUPS [Jam 10:00:00]: POWR, NICE, UFOE

\*Data pengumuman diambil terakhir pada hari :

Rabu, 20 November 2024 pukul 08:06:37

# DISCLAIMER



Telp : +62 21 3983 6420  
Fax : +62 21 3983 6422  
Email:  
admin.aonline@erdikha.com  
afo.elit@erdikha.com  
Career: hrd@erdikha.com

## **SEMARANG**

JL. Sembodro No. 12A, Plomblokan  
Kec. Semarang Utara, Kota Semarang  
Jawa Tengah – 50171  
WA : +6281808054623  
Telp : +62243512068

## **JAKARTA (Head Office)**

Gedung Sucaco Lt 3  
JL. Kebon Sirih Kav. 71  
Jakarta Pusat – 10340  
Telp : +622139836420

### Disclaimer :

The information contained herein has been compiled from sources that we believe to be reliable. No warranty (express or implied) is made to the accuracy or completeness of the information. All opinions and estimates included in this report constitute our judgment as of this date, without regards to its fairness, and are subject to change without notice. This document has been prepared for general information only, without regards to the specific objectives, financial situation and needs of any particular person who may receive it. No responsibility or liability whatsoever or howsoever arising is accepted in relation to the contents hereof by any company mentioned herein, or any their respective directors, officers or employees. This document is not an offer to sell or a solicitation to buy any securities. This firms and its affiliates and their officers and employees may have a position, make markets, act as principal or engage in transaction in securities or related investments of any company mentioned herein, may perform services for or solicit business from any company mentioned herein, and may have acted upon or used any of the recommendations herein before they have been provided to you. Available only to person having professional experience in matters relating to investments.